

SPECIFICATIONS

COLD WATER DISPENSER

SO-140



Power: 110V, 60 Hz

Consumption: 170W

Thermostat: Mechanical control - preadjusted at 41°F

Cooling temperature: 39.2°F ~ 50°F

Tank capacity: 0.3 gallons

Cooling capacity: 2.4 gallons / hour

Dimensions: W x D x H (inches): 7 3/32" x 9 29/64" x 15 23/64" - 17 21/64" (with fittings)

Weight: 26.5 lbs

Water inlet diameter: 1/4" NPT male

Water outlet diameter: 1/4" NPT male

Power cord length: 63"

Material of body: Plastic & metal

Compressor:

Brand: Matsushita (Panasonic)

Capacity: 360 Btu/h

Working: 200W

Power: 1.2 A

Refrigerant: R134A

International Drinking Water Fountain's advantages

- Triple filtration system (Sediment, softener and charcoal filter)
- Water leak detector
- Stainless steel tank
- Conditional warranty of 7 years on cooling components and labour
- Must be installed with a leak detector and pressure regulator adjusted under 60 PSI (see the conditions of our warranty on our website)

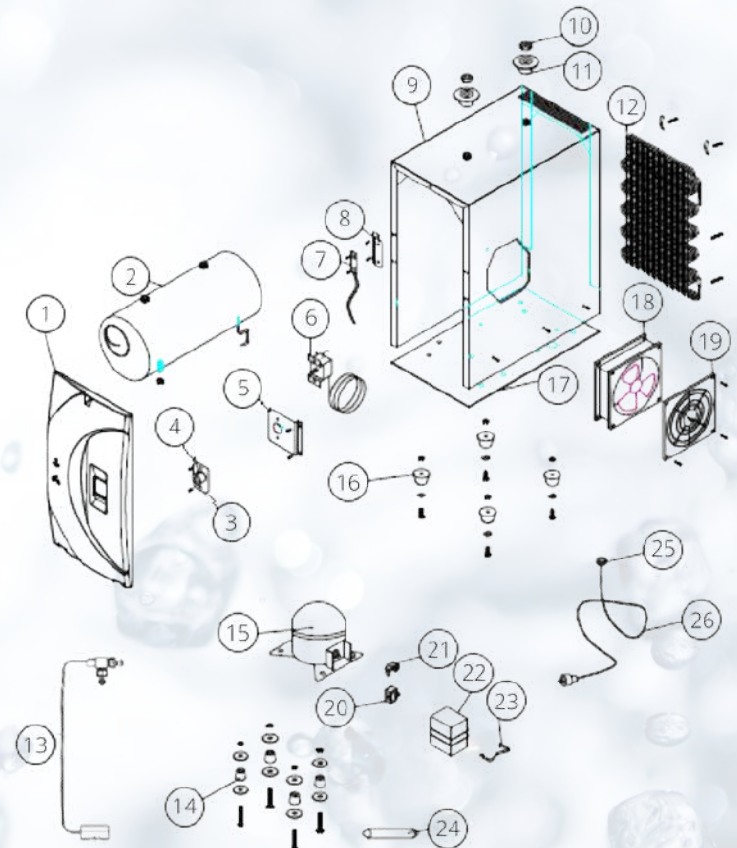


COLD WATER DISPENSER

SO-140

Parts

1. Front panel
2. Tank assembly
3. Thermostat iron plate
4. Thermostat knob
5. Thermostat knob holder
6. Mechanical thermostat
7. Indicator light
8. Indicator light holder
9. Frame
10. Nut
11. Drain plug
12. Condensor
13. Water leak detector
14. Rubber compressor feet
15. Compressor
16. Screws of the unit
17. Bottom panel
18. Cooling fan
19. Fan safety net
20. Relay
21. Compressor protector
22. Compressor protection cover
23. Compressor protection box
24. Drier
25. Power overload protector
26. Power cord

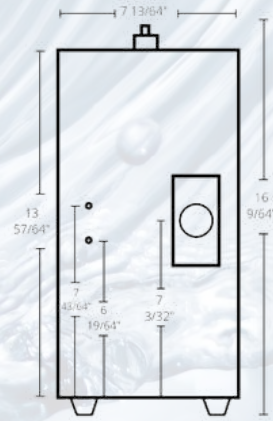




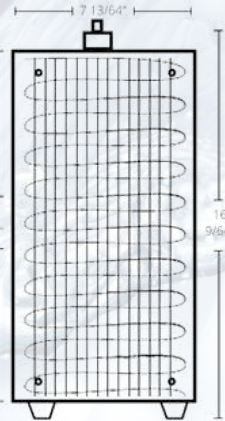
**COLD WATER
DISPENSER**

SO-140

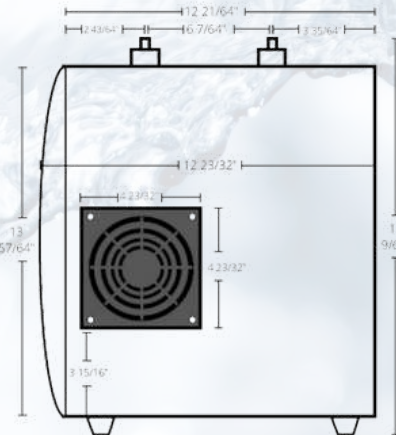
Front



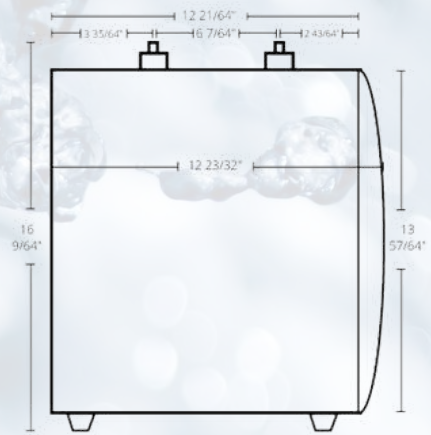
Back



Left side



Right side



Hole alignment for faucet

The hole must be 1/2" in diameter.

